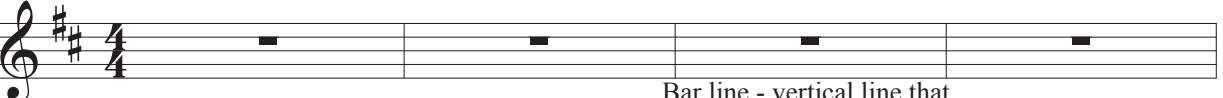


Music Theory Basics

♩ = 120 Metronome mark = sets the Tempo (speed) of the song

Key Signature of 2 Sharps

Treble Clef - for women's voices, high instruments



Time signature:
4 beats in each measure,
Quarter note = 1 beat

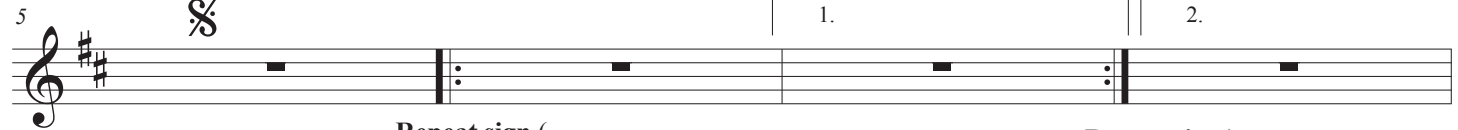
Bar line - vertical line that divides into bars or "measures"

Measure number

Signe=The Sign
D.S. = go back to this Sign

First ending -
skip over me next time!

Second ending -
now go on

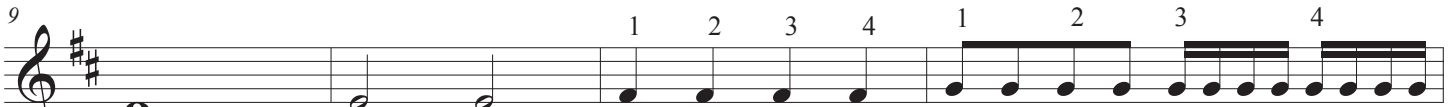


Repeat sign (
Start again from here
when its mate) sends you back

Repeat sign (
Go backwards to find its mate (and do this section again

NOTE VALUES:
how long to hold

Counting the beats:



Whole note=4 beats,
the whole measure

Half notes=
2 beats each

Quarter notes=
1 beat each

Eighth notes=
1/2 beat each

Sixteenth notes=
1/4 beat each

REST VALUES:
how long to be silent



Whole rest=4 beats

Half rests=2 beats each

Quarter rests=1 beat each

Eighth rests= 1/2 beat each

Sixteenth rests=1/4 beat each

PITCHES:
How high or low

Natural sign - Takes away the key signature's sharp or flat for just that measure

Dotted quarter=
1 1/2 beats



Steps / scale motion
space, line, space, line

Sharp sign
Flat sign

Small skips
space, space, line, line

Bigger Skips